



SUSTAINABLE OPERATIONS & RESILIENCE COMMITTEE

ORANGE COUNTY, FL



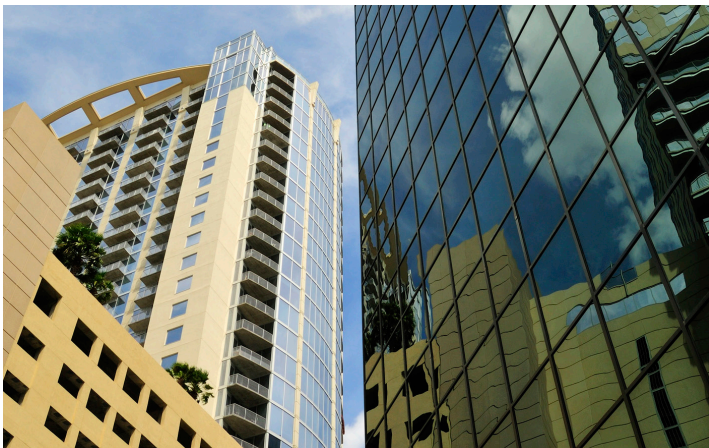
COMMITTEE BRIEF

In July 2020, Mayor Demings appointed a 40-member external committee of sustainability and resilience subject matter experts from surrounding businesses, agencies, municipalities and universities to assist staff with the development of a 2030 Action Plan for internal County operations. This effort to build a collaborative set of goals aligned with regional and national objectives is key to the County's more aggressive sustainability agenda. This will establish a platform for broader community adoption of new programs and resilience efforts. The 40-member committee was led by two co-chairs from our community:

Leila Jamal, Vice President, NV5 Engineering
Byron Knibbs, former Vice President, Orlando Utilities Commission

FOCUS AREAS

- Energy & Climate Action
- Buildings & Infrastructure
- Water Use & Quality
- Mobility & Fleet
- Supply Chain & Materials Management
- Trees & Lands



COMMITTEE RECOMMENDED PRIORITIES

- Prioritize health impacts and health benefits in all of our strategies.
- Regional collaboration and capacity building with all cities and towns in Orange County.
- Lead with a 'One Water' mission of cross-sector integrated water quantity, quality management and access for all.
- Community-wide strategy for investment in existing buildings and infrastructure to spur economic development and reduce costs.
- Food systems and resilience strategy to include food access, food cultivation, food recovery and food waste collection.
- Align programs for housing affordability, utility bill burdens and reduced vulnerabilities for aging in place homes. Enhance home energy efficiency and other rebate programs to include renters.
- Create a workforce development strategy focused on urban agriculture, green jobs and smart infrastructure technology to help drive achievement of community-wide goals.

SUSTAINABLE OPERATIONS & RESILIENCE ACTION PLAN

INTERNAL GOALS HIGHLIGHT

Mayor Demings' appointed committee helped define 17 goals and actions that County operations will adopt. They are designed to be data driven, innovative, achievable and impactful.

Goal Highlights Include:

- Align energy management strategies across County departments to reduce 30% of building and infrastructure energy use by 2025
- Optimize vehicle fleet performance through on-board technology and a 50% reduction of petroleum-based fuel by 2030
- Develop clean and safe access to alternate water supply to meet future demand
- Increase waste diversion rates to 70% by 2030 at County facilities
- Preserve an additional 23,000 acres of environmentally sensitive lands and increase County natural land assets by 2030
- Protect and enhance tree canopy and wildlife habitats on County properties
- Achieve 100% of County operations electricity load from clean, renewable sources by 2035
- Implement community-wide energy saving programs for all
- Improve vehicle, bicycle and pedestrian roadway safety, resilience and interoperability through traffic technology retrofits at 300 intersections by 2025



GLOBAL ALIGNMENT

We believe that an alignment of regional efforts and global standards will place Orange County among the top sustainable counties in the nation.



STRATEGIC INITIATIVE

The goals and actions are designed to integrate strategic priorities through a variety of planning guidelines and strategic documents such as:

- Orange County Comprehensive Plan - Vision 2050
- Housing For All Action Plan
- Transportation Improvement Plan
- Orange County Convention Center Sustainability Action Plan
- Capital Improvement Projects Plan
- Parks & Recreation Master Plan
- Community Action Plan
- Sustainable Materials Management Plan

COMMUNITY RESILIENCE

Community resilience is the capacity of individuals, industry and governments within a community to absorb, endure and recover from the impacts of natural, health and socio-economic shocks and stressors. The ability to "Bounce-Forward" from these shocks and stressors is the mindset we want to create.

The Regional Resilience Collaborative seeks to establish specific regional indicators to benchmark and track progress of our communities to sustain our quality of life and enhance our PEOPLE, PLACES, and PROSPERITY through focused actions around:

- Social Equity & Environmental Justice
- Infrastructure Resilience
- Emerging Technology
- Nature-based assets